

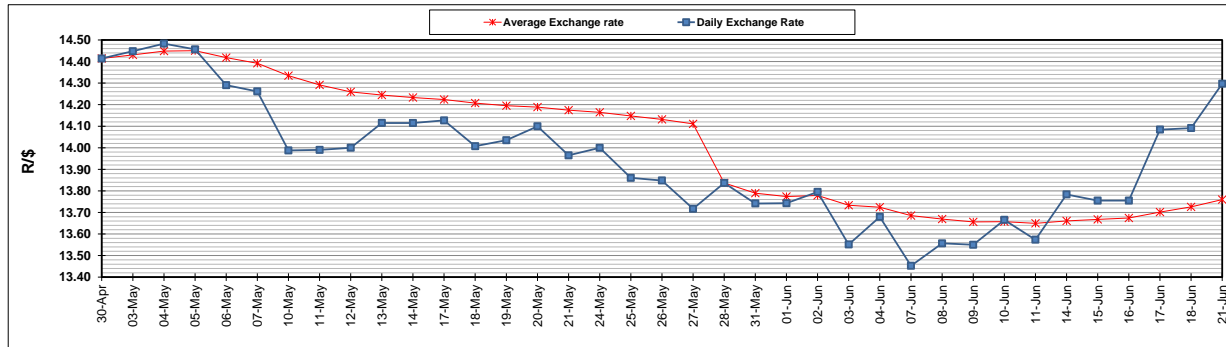
	PETROL 95 ULP	PETROL 93 ULP & LRP	DIESEL 0.05%	DIESEL 0.005%	ILL. PAR.
GAUTENG PUMP PRICE (SA c/l) AS FROM 02/06/2021	1,713.000	1,691.000	-	-	-
WHOLESALE PRICE (SA c/l) AS FROM 02/06/2021	-	-	1,466.620	1,471.020	877.488
SINGLE NATIONAL MAXIMUM RETAIL PRICE	-	-	-	-	1,102.000
BASIC FUEL PRICE - 21/06/2021 (SA c/l)	769.487	760.711	744.332	747.805	722.229
PRESS RELEASE CONTRIBUTION TO BFP 02/06/2021 - 21/06/2021 (SA c/l)	717.170	705.170	679.630	684.030	664.128
UNIT OVER/(UNDER) RECOVERY - 21/06/2021 (SA c/l)	(52.317)	(55.541)	(64.702)	(63.775)	(58.101)
AVERAGE BASIC FUEL PRICE 28/05/2021 - 21/06/2021	723.502	715.218	704.468	707.978	682.991
AVERAGE UNIT OVER/(UNDER) RECOVERY 28/05/2021 - 21/06/2021	(4.568)	(8.283)	(28.368)	(27.654)	(22.393)

### ANALYSIS MOVEMENT OF AVERAGE OVER/(UNDER) RECOVERY

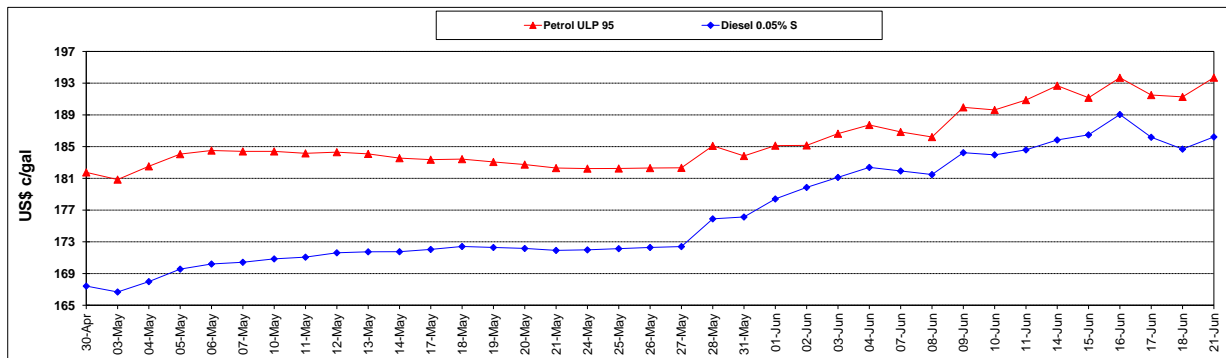
	PETROL 95	PETROL 93	DIESEL 0.05%	DIESEL 0.005%	ILL. PAR.
- MOVEMENT IN INTERNATIONAL PRODUCT PRICES	(23.055)	(26.559)	(46.369)	(45.745)	(39.845)
- MOVEMENT IN EXCHANGE RATE	18.488	18.276	18.002	18.091	17.453
AVERAGE UNIT OVER/(UNDER) RECOVERY 28/05/2021 - 21/06/2021	(4.568)	(8.283)	(28.368)	(27.654)	(22.393)

### R/\$ EXCHANGE RATE - (R/\$14.2970- 21/06/2021)

#### EXCHANGE RATE USED IN BASIC FUEL PRICE



#### INTERNATIONAL PRODUCT PRICES OF BASKET USED IN BASIC FUEL PRICE



#### BASIC FUEL PRICE IN SA CENTS PER LITRE

